

## Warwickshire Waste Partnership

19th December 2018

### Waste Data Overview for Q1 + Q2 2018/19 Household waste performance for 2017/18 and projections for 2018/19

#### Recommendations

- (1) The Partnership is asked to note the provisional data for the 1<sup>st</sup> and 2<sup>nd</sup> quarters of 2018/19 - April to September 2018.
- (2) The Partnership is asked to note the provisional data for the financial year 2017/18 and estimated projections for 2018/19, based on the first half of the year's performance.

#### 1.0 Data Overview

- 1.1 This report contains a mixture of data taken from Waste Data Flow and from Warwickshire County Council in-house records and at the publication of this report are considered **provisional estimates**.
- 1.2 The figures should be treated as provisional as data may be changed until all authorities data is approved by the EA and DEFRA through the Waste Data Flow System.

	Name	Contact Information
Report Author	Nav Rai	<a href="mailto:navrai@warwickshire.gov.uk">navrai@warwickshire.gov.uk</a>
Assistant Director for Environment Services	Stuart Jackson	<a href="mailto:stuartjackson@warwickshire.gov.uk">stuartjackson@warwickshire.gov.uk</a>
Joint Managing Director (Communities)	Monica Fogarty	<a href="mailto:monicafogarty@warwickshire.gov.uk">monicafogarty@warwickshire.gov.uk</a>
Portfolio Holder - Environment and Heritage and Culture	David Reilly	<a href="mailto:cilreilly@warwickshire.gov.uk">cilreilly@warwickshire.gov.uk</a>

## Provisional Waste Management Data Quarter 1 + 2 2018/19

### 1. Estimated provisional performance Q1 + Q2 (household waste)

	Q1 + Q2 2017/18	Q1 + Q2 2018/19	Change
<b>Recycling/Reuse rate</b>	30,959 tonnes	31,359 tonnes	☺ 400 tonnes up
	22.8%	23.4%	☺ 0.6% up
<b>Composting rate</b>	45,919 tonnes	44,024 tonnes	✘ 1,895 tonnes down
	33.9%	32.9%	✘ 1.0% tonnes down
<b>Recycling, Composting and Reuse rate</b>	76,878 tonnes	75,383 tonnes	✘ 1,495 tonnes down
	56.7%	56.3%	✘ 0.4% down
<b>Landfill rate</b>	20,274 tonnes	19,575 tonnes	☺ 699 tonnes down
	15.0%	14.6%	☺ 0.4% down
<b>Energy from waste</b>	38,437 tonnes	39,055 tonnes	✘ 618 tonnes up
	28.3%	29.1%	✘ 0.8% up
<b>Total Household waste</b>	135,589 tonnes	134,013 tonnes	☺ 1,576 tonnes down
			☺ 1.2% down

**2. Provisional Performance for 2017/18, with estimated projections for 2018/19 (household waste)**

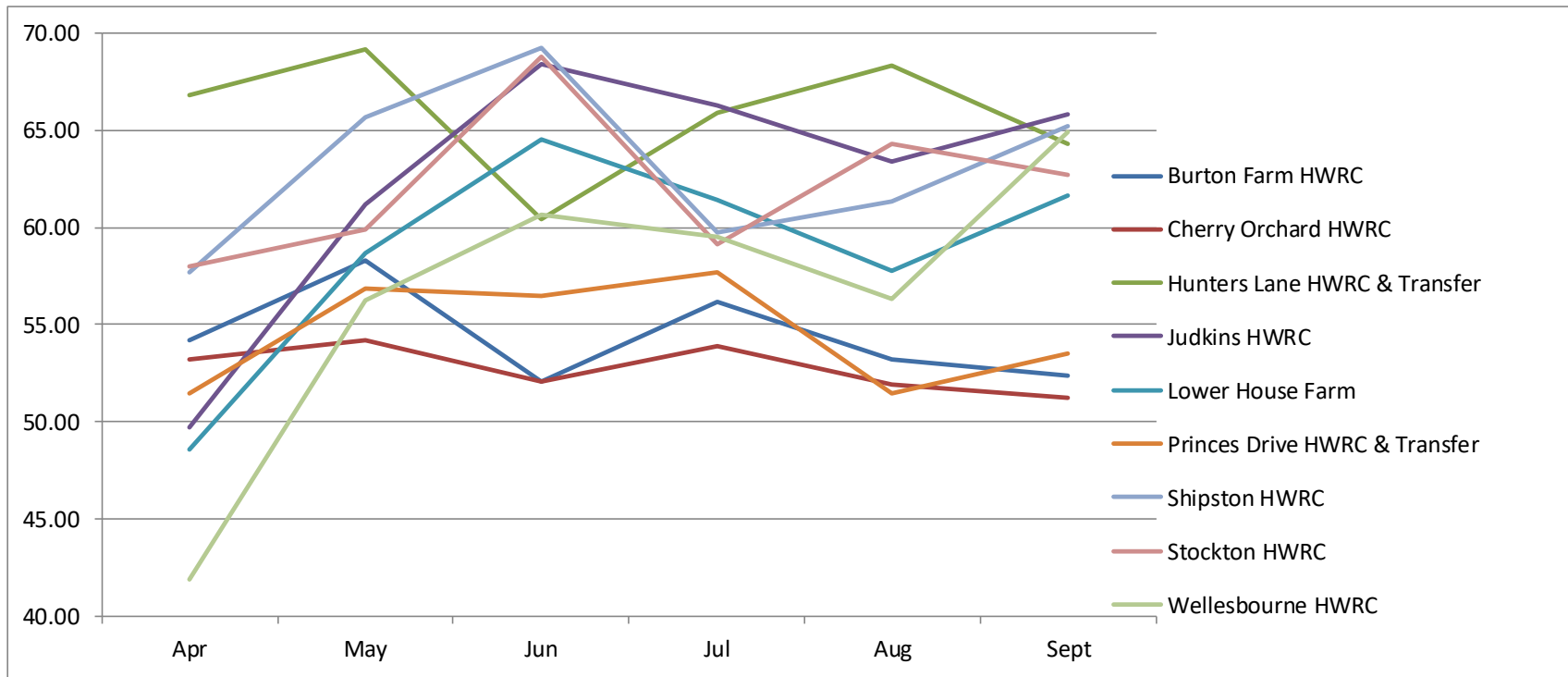
HH	North Warwickshire			Nuneaton and Bedworth			Rugby			Stratford			Warwick			Warwickshire		
	2016-17	2017-18	2018-19 est	2016-17	2017-18	2018-19 est	2016-17	2017-18	2018-19 est	2016-17	2017-18	2018-19 est	2016-17	2017-18	2018-19 est	2016-17	2017-18	2018-19 est
<b>Recycling rate</b>	5,300 tonnes 19%	5,335 tonnes 19%	5,526 tonnes 20%	8,456 tonnes 18%	9,292 tonnes 19%	9,328 tonnes 19%	9,761 tonnes 23%	10,277 tonnes 26%	10,289 tonnes 26%	14,032 tonnes 25%	14,044 tonnes 25%	14,210 tonnes 26%	11,441 tonnes 22%	10,823 tonnes 21%	10,836 tonnes 21%	64,832 tonnes 25%	60,639 tonnes 24%	61,039 tonnes 24%
<b>Composting rate</b>	7,850 tonnes 28%	7,417 tonnes 26%	6,835 tonnes 25%	12,115 tonnes 25%	11,258 tonnes 23%	10,838 tonnes 23%	11,643 tonnes 27%	7,573 tonnes 19%	7,379 tonnes 18%	20,511 tonnes 36%	19,503 tonnes 35%	19,018 tonnes 35%	17,365 tonnes 33%	16,212 tonnes 31%	15,770 tonnes 31%	75,981 tonnes 29%	69,726 tonnes 27%	67,831 tonnes 27%
<b>Recycling, Composting and Reuse Rate</b>	13,152 tonnes 46%	12,788 tonnes 46%	12,397 tonnes 45%	20,571 tonnes 43%	20,754 tonnes 43%	20,370 tonnes 43%	21,404 tonnes 50%	17,862 tonnes 45%	17,680 tonnes 44%	34,543 tonnes 61%	33,548 tonnes 60%	33,229 tonnes 60%	28,806 tonnes 55%	27,035 tonnes 52%	26,606 tonnes 52%	140,813 tonnes 54%	130,365 tonnes 51%	128,870 tonnes 51%
<b>Residual</b>	15,340 tonnes 54%	15,307 tonnes 54%	15,065 tonnes 55%	27,572 tonnes 57%	27,586 tonnes 57%	27,522 tonnes 57%	21,317 tonnes 50%	22,163 tonnes 55%	22,317 tonnes 56%	21,847 tonnes 39%	22,113 tonnes 40%	22,023 tonnes 40%	23,892 tonnes 45%	24,700 tonnes 48%	24,684 tonnes 48%	118,018 tonnes 46%	123,686 tonnes 49%	123,605 tonnes 49%
<b>Total</b>	28,492 tonnes	28,095 tonnes	27,461 tonnes	48,143 tonnes	48,340 tonnes	47,892 tonnes	42,721 tonnes	40,025 tonnes	39,997 tonnes	56,390 tonnes	55,661 tonnes	54,947 tonnes	52,698 tonnes	51,735 tonnes	51,290 tonnes	258,831 tonnes	254,051 tonnes	252,475 tonnes
<b>Kg of residual per HH</b>	558 Kg	550 Kg	536 Kg	495 Kg	491 Kg	487 Kg	471 Kg	485 Kg	482 Kg	388 Kg	386 Kg	377 Kg	387 Kg	395 Kg	386 Kg	479 Kg	496 Kg	488 Kg
<b>Kg of all waste per HH</b>	1,036 Kg	1,010 Kg	978 Kg	864 Kg	861 Kg	847 Kg	945 Kg	875 Kg	864 Kg	1,001 Kg	971 Kg	941 Kg	854 Kg	827 Kg	802 Kg	1,050 Kg	1,018 Kg	997 Kg

**Partnership Targets 2020**

**Reuse, Recycling and Composting Rate 65%**

**Kg of Residual Waste per Household 311kg**

### 3. HWRC Performance for Q1 and Q2 2018/19



	Burton Farm HWRC	Cherry Orchard HWRC	Hunters Lane HWRC & Transfer	Judkins HWRC	Lower House Farm HWRC	Princes Drive HWRC & Transfer	Shipston HWRC	Stockton HWRC	Welles HWRC	Total
<b>Apr</b>	54.20	53.20	66.80	49.67	48.60	51.42	57.70	58.00	41.90	52.43
<b>May</b>	58.30	54.20	69.20	61.20	58.67	56.88	65.64	59.88	56.24	59.34
<b>Jun</b>	52.10	52.10	60.40	68.40	64.50	56.44	69.27	68.77	60.67	61.26
<b>Jul</b>	56.20	53.90	65.90	66.30	61.42	57.69	59.75	59.16	59.54	58.01
<b>Aug</b>	53.20	51.90	68.30	63.40	57.73	51.44	61.31	64.30	56.33	56.65
<b>Sept</b>	52.40	51.20	64.30	65.80	61.65	53.47	65.22	62.73	64.90	58.74
<b>Overall</b>	54.40	52.75	65.82	62.46	58.76	54.56	63.15	62.14	56.60	57.74